



Deep Blue International Co., Ltd.
泉州市宝多龙石业有限公司

NANLIAN STONE PROCESSING AREA, GUANQIAO TOWN,
NANAN CITY, QUANZHOU, FUJIAN, CHINA
POST CODE: 362341
福建省泉州市南安市官桥镇南联石材集中加工区

+86 595 22772293

+86 595 22772292

info@deepblueint.com

www.deepblueint.com



泉州市宝多龙石业有限公司



Deep Blue International Co., Ltd is mainly providing natural stones to the projects worldwide. Our company was founded in 2008 and located in Fujian, China; which is the main area of natural stone production. The founders of Deep Blue International are architects who are specialized in the natural stone sector since 2002.

DeepBlue International Co., Ltd has experienced more than 10 years of continuous growth. Till now, its facilities cover areas in China 32,000 square meters using the latest manufacturing technology. Our stone is quarried and processed to exacting specifications which enables us to supply superior product lines. Due to our wide knowledge on granite and marble quarries including factories settled all around the world, our company has the ability to provide any required material in the required time of delivery and quality for the projects. Deep Blue International is developing and improving day by day with the new investments and this rewarded power.

Ada Tas (Turkey), Gemfam (Turkey), Dragon Stone (China), ENS (Australia), ArtePierre (USA) are our group companies and we all together with our creative team, with our manufacturing plants, with our dedicated specialists, we are able to artistically execute your conceptual vision into all modern era that is innovative and tangible. Together we are committed to the infinite, live details and strive to ensure you enjoy the result.

Deep Blue establishes long-lasting relations with the companies co-operating via wide stone resources knowledge, advanced process experiences, good service, reliable suppliers and sincere business partnership features.





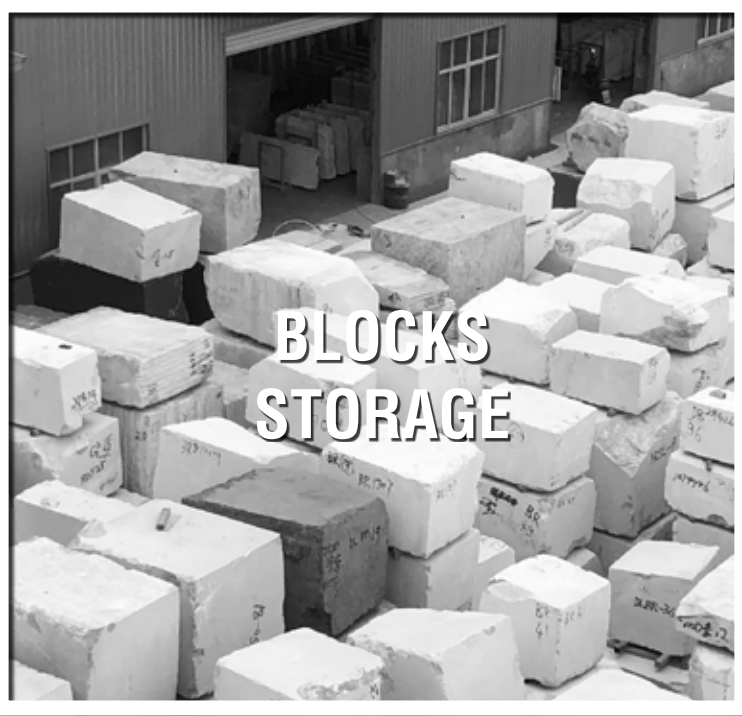


Deep Blue International Factory is located in Nanan City, Quanzhou, Fujian CHINA.

It covers an area of 32,000m² and total closed area 20,000m², with a wide range of stocked stone blocks and slabs area.

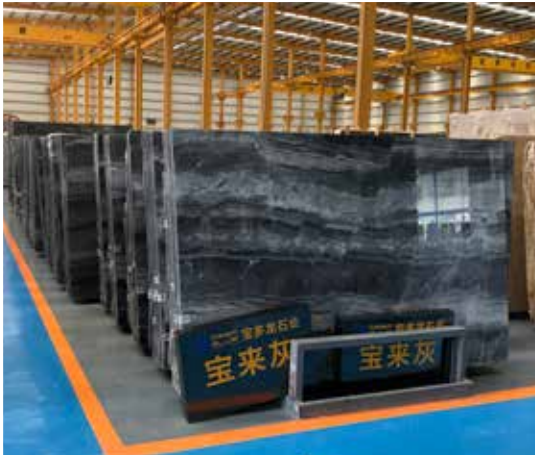
With the latest manufacturing technology and the professional team, it can process 480,000m² of slabs and 600,000m² of cut-to-size and various 'irregular shaped products' each year.





Deep Blue runs a global purchasing network systems, imports wide range of stone blocks every year.





Deep Blue not only stocks 100,000m² of slabs every year and also carries more than 100 brands of products to meet all the diversified needs of clients.



We have knowledge and experience for most of the Chinese, Indian, Turkish, Greece, etc. stone (marble & granite) quarries.

We have supplied worldwide stones finished product to several projects all over the world.

Our responsibility for the project starts by choosing the suitable blocks from the quarries.

Furthermore, Deep Blue International has own modern marble quarry in Turkey and granite quarry in Egypt.





PROCESSING
CAPACITY /
EQUIPMENT



GANGSAW MACHINES (CUTTING SLABS)



RESIN LINE



FULLY AUTOMATIC 20 HEADS POLISHING LINE



OUR MACHINERY

Outdoor and Indoor Cranes
Block Turning Machines
Block Squaring Machines
Gang Saws
Resin Line
Fully Automatic 20 Heads Polishing Line

Slab Scanner Machine
Water treatment Machine
Infrared Bridge Cutting Machines
20 Heads Fully Automatic Profile Machine
Water Jets
Splitting Machines

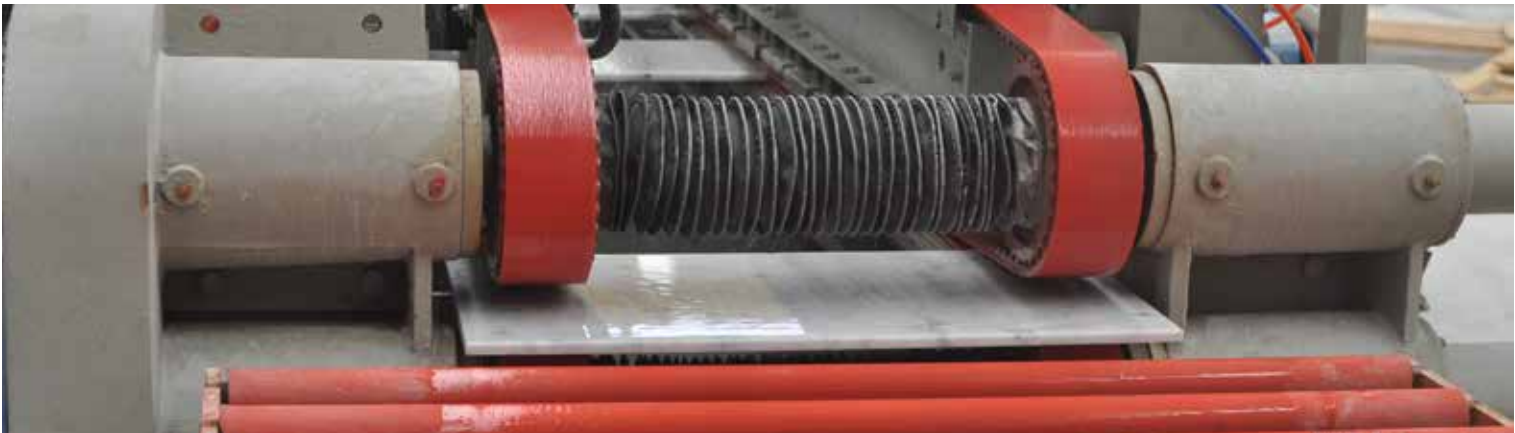
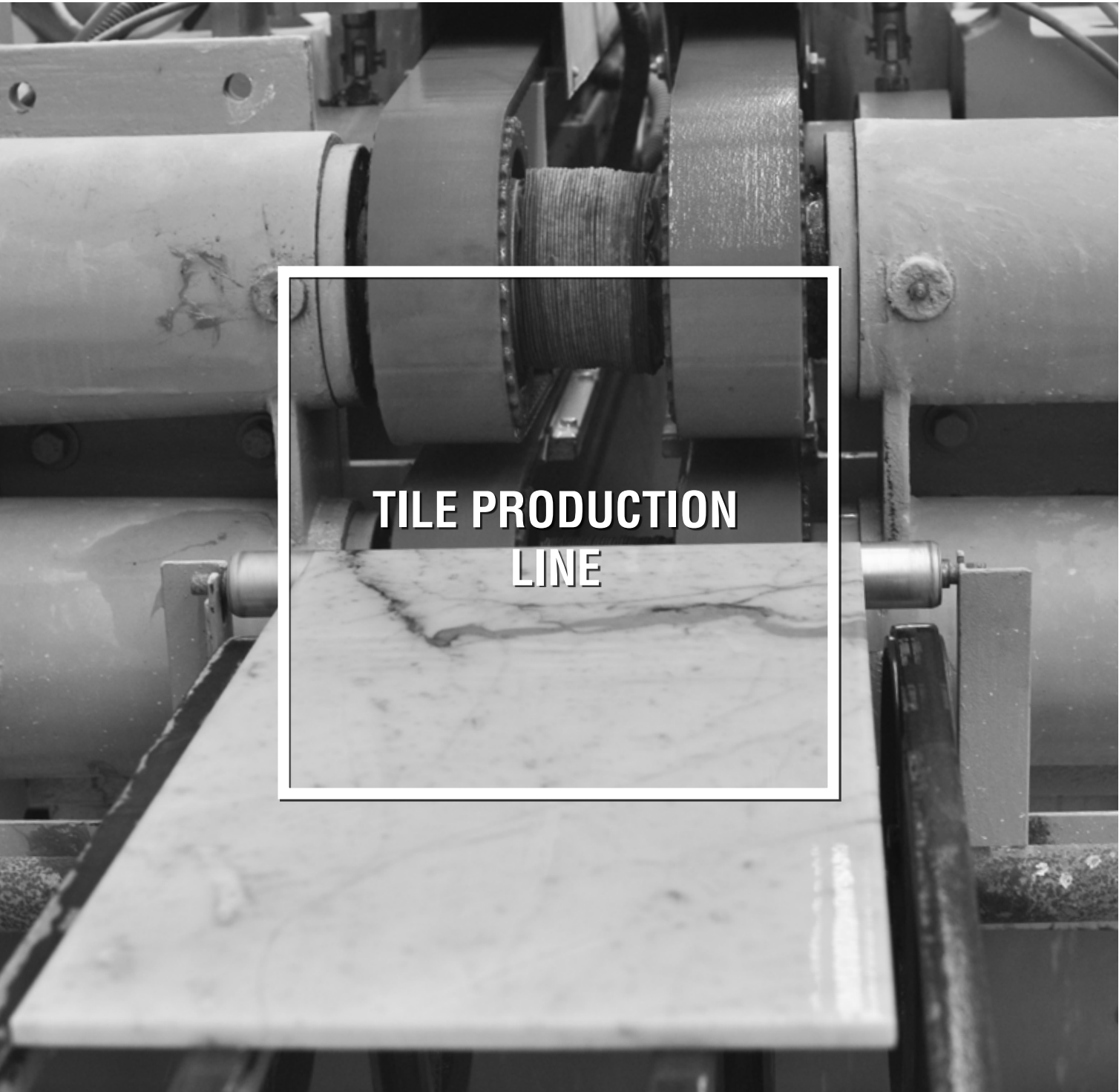
Edge Polishing Machines
Manual Profile, Edge , and Polishing Machines
Forklifts
Automatic Trans - pallets

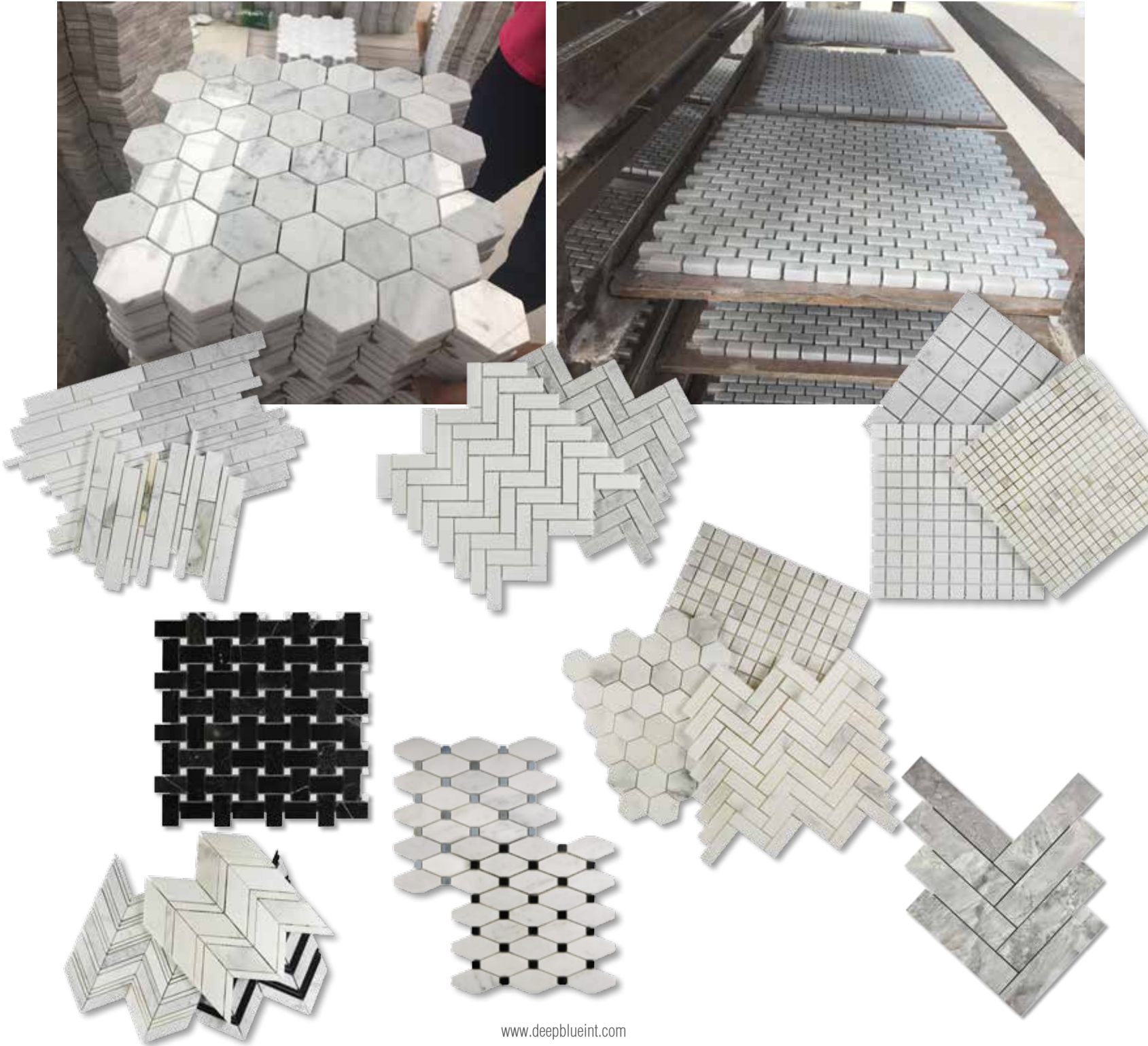


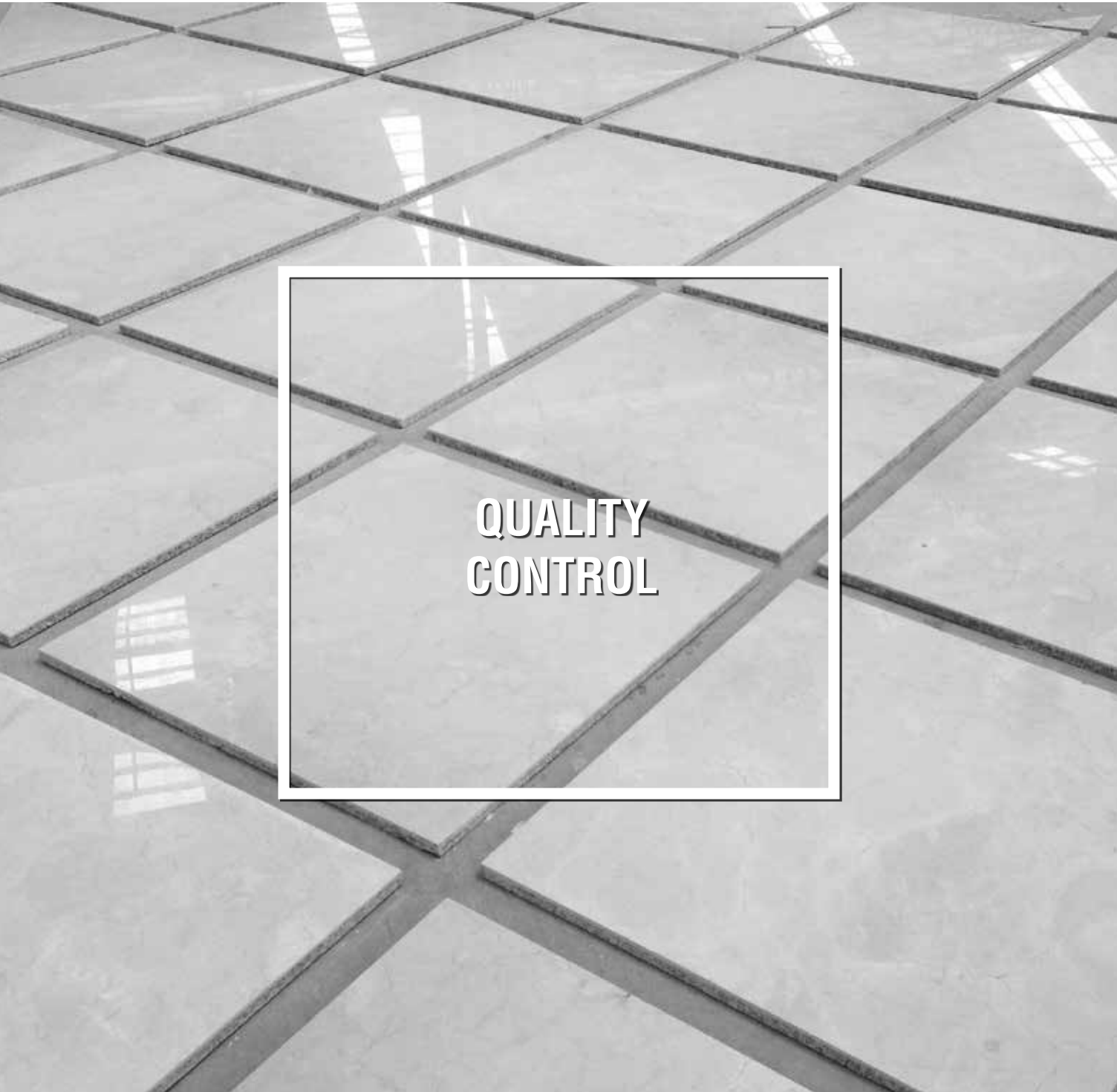
PROCESSING CAPACITY / EQUIPMENT



The assistant of our knowledgeable team to produce masterpieces, Deep Blue International factory has the largest range of stone processing machinery. The day by day our factory has grown with the latest technology machines.







Under the specifications of ISO 9001: 2015, it established the quality management system which let us the provision of inspection services for stone products and stone tools.

Deep Blue International employs professional quality control inspectors who take their job neatly and their role on production Starting from the scratch; choosing blocks, production and packing procedure until proper loading and shipping of containers.

- Geometry • Measurement • Photometry / Surface • Thickness • Flatness • Color Selection • Packing



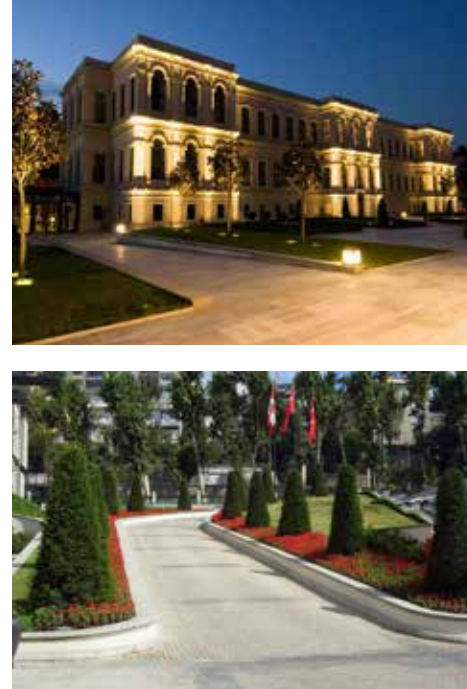


*Natural Stones are Unique, Durable, Robust
and Aesthetics Material.*

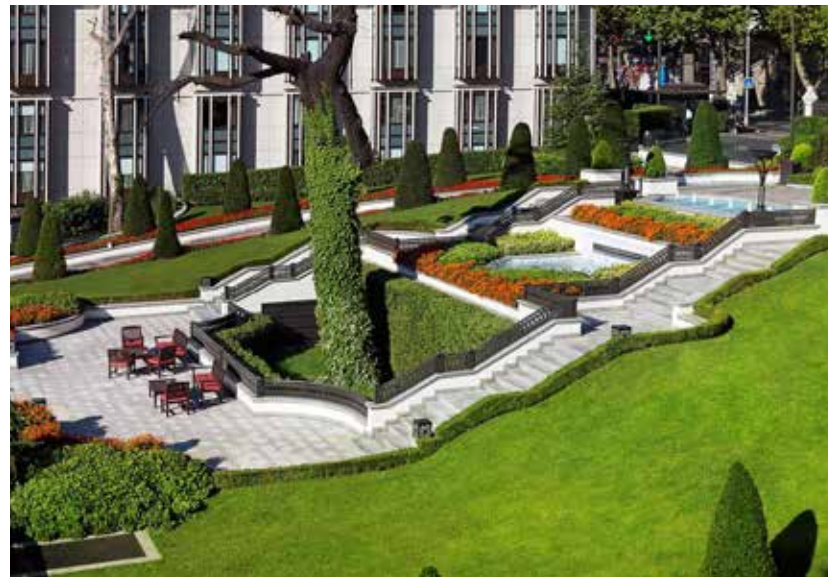
PROJECTS

*Natural stone is a product of nature and is therefore subject to natural variations of color, shading,
veins, markings and texture from piece to piece.*

ATIKPASA FOUR SEASONS HOTEL



Built as a turnkey Project by Yapı Merkezi “Four Seasons Hotel Istanbul at the Bosphorus” complex with 190 meters shoreline is built on an area of 17.525 m² and consists of two new Hotel blocks and a restored historical seaside palace. Landscape natural stone materials are provided and applied by us.



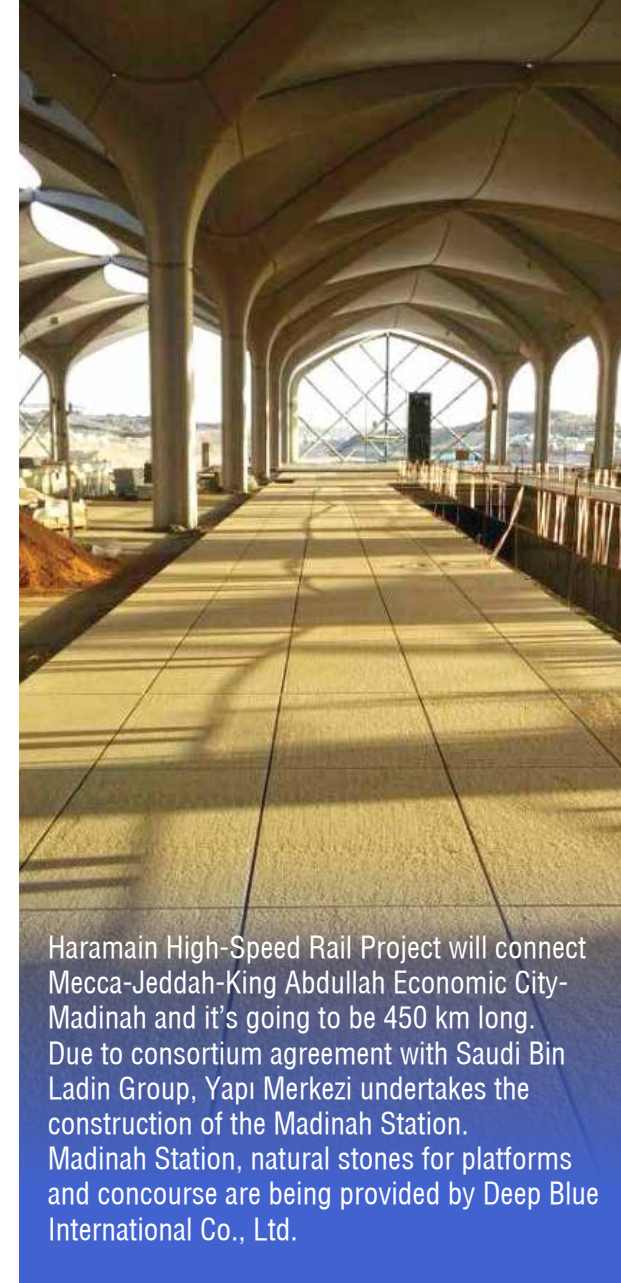
KAZAKHISTAN JITI HEAD QUARTERS



MARMARAY BC-1 PROJECT BOSPHORUS TUNNEL CROSSING - ISTANBUL



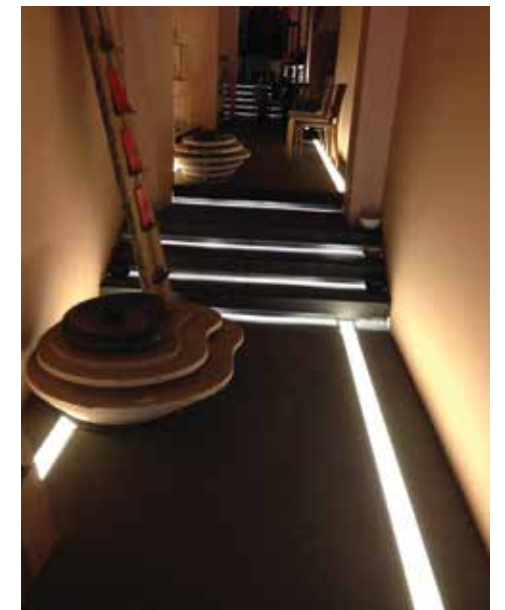
HARAMIAN HIGH SPEED RAILWAY MADINAH STATION



BUZNOVA ESTATE PROJECT- BAKU AZERBAIJAN



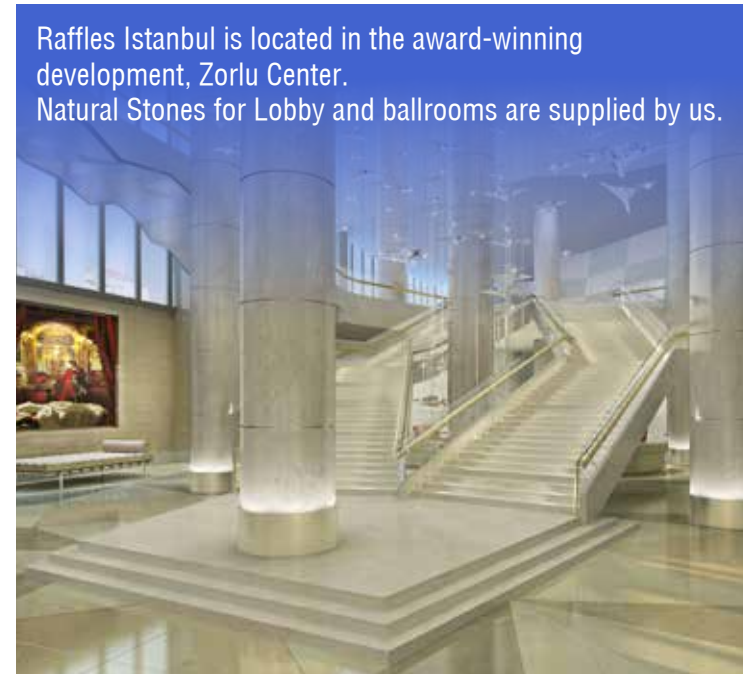
ISTANBUL DELTA NICHOL SHOWROOM



ZORLU CENTER, RAFFLES HOTEL - ISTANBUL



Raffles Istanbul is located in the award-winning development, Zorlu Center. Natural Stones for Lobby and ballrooms are supplied by us.



ISTANBUL TAKSIM SQUARE LANDSCAPE FURNITURE AND PAVING STONE



Taksim Square is situated in Beyoglu in the European part of Istanbul and considered the heart of modern Istanbul.

Deep Blue international not only took the role of providing all granite and diabaz city furniture and also transported to the job site and installed during the Taksim square pedestrianization project.

Furthermore, Deep Blue International group company Ada Tas Dis Ticaret Ltd. Sti. supplied paving stone granite materials for Taksim Square and also Istiklal Street.



MUSCAT AIRPORT (MC-3) PROJECT



Muscat International Airport is the largest project ever to be undertaken in the history of the Sultanate of Oman. The numbers are extraordinary. The terminal sits on a floorplate of 418,202m² – equivalent to 80 football pitches – making it the largest building in the country. Bechtel & Co.LLC and Enka & Co.LLC Joint Venture completed final design and building of a new terminal and associated facilities. Airport external and internal areas natural stones mainly were supplied by Deep Blue International Co., Ltd.

The new state-of-the-art passenger terminal is the first encounter many visitors have with Oman. The airport currently has the capacity to handle 20 million passengers per year, with further expansions planned in three subsequent phases to ultimately boost the airport's capacity to 24M, 36M, and 48M passengers. The airport can now accommodate larger aircraft – including the A380, the world's largest aircraft – and has enabled Oman Air to launch new routes.

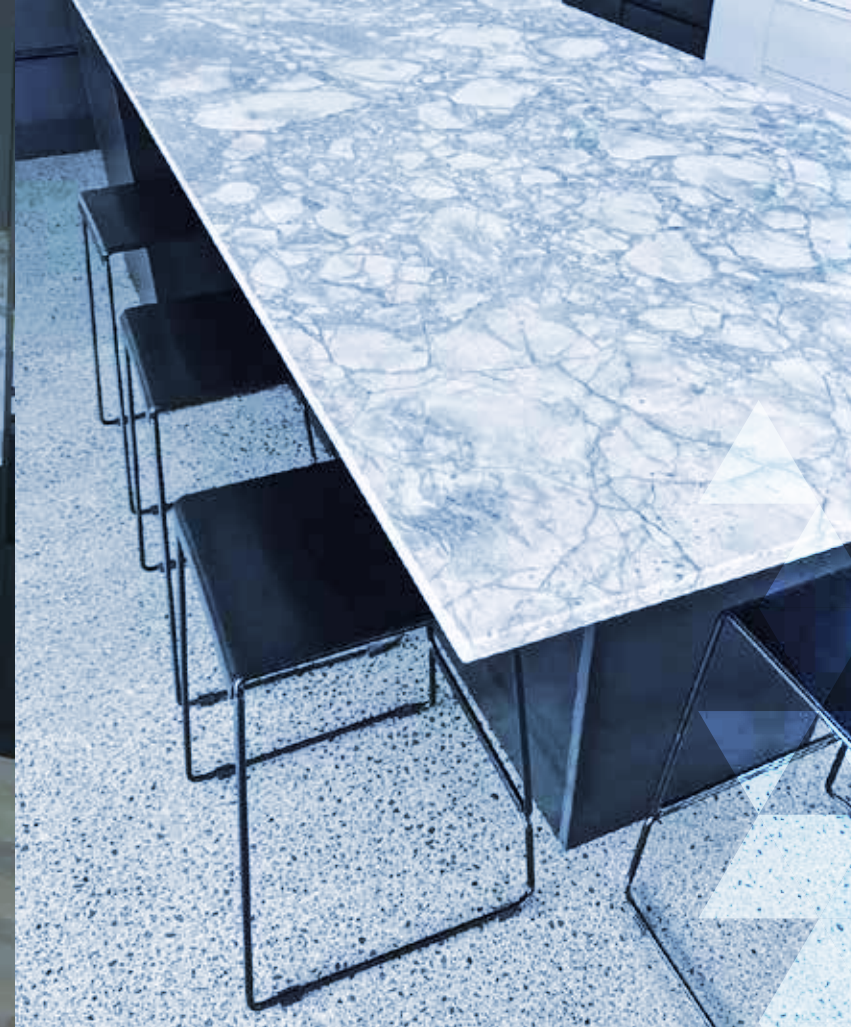
In March 2018, after 70 months of construction, the passenger terminal building and maintenance yard buildings commenced commercial operation as planned and without issue.



MARYLAND LIVE PROJECT - HANOVER, MD 21076 USA

Deep Blue International has a unique position in the hospitality, commercial and residential sectors. In collaboration with MD Live Hotel's design team, We have exclusively created honeycomb back water jets for floor cladding.







2019 / Papua New Guinea American Embassy Project
Material: Eastern Cream Limestone, Blue Limestone, Blue Pearl Granite - 8.000 m²



2018 / Maryland Live Project - Hanover, MD 21076 USA
Material: Honeycomb Backed Waterjet Nero Marquina and Carrara White Marble - 12 pcs Medallions



2018 / Qatar, Doha Oasis Project
Material: Timber Brown Marble - 6.200 m²



2018 / Istanbul, Eminonu & Beyazid Square Landscape Furniture& Paving Stone
Material: Diabaz, Grey Granite



2018 / China PICC (People's Insurance Company of China) Xian Office Building Project
Material: Grey Granite - 6.000 m²



2017 / Georgia Tibilisi Airport Project (TAV)
Material: Light Grey Granite - 8.000 m²



2014-2018 Muscat Airport (MC-3) Project

Material: Light Grey Granite, Mid Grey Granite, Light Beige Granite, Desert Rose Omani Limestone, Ruby Red Granite, Star Galaxy Granite, Namibian Sky Glass Composite, White Onyx Glass Composite, Calacatta Marble, Paradiso Granite, Honeycomb Panels - 175.000 m²



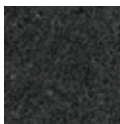
2017- Republic of Turkey Ministry of Foreign Affairs New Building Project for Turkish Embassy Staff Lodging in Islamabad, Pakistan

Material: Pearl White Granite - 5.500 m²



2016-2017 - Istanbul Taksim Square Landscape Furniture & Paving Stone

Material: Diabaz, White Granite



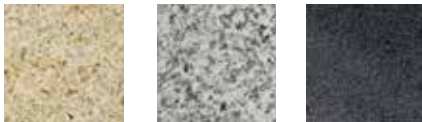
2015-2016 Qing Ran Ban Dao Hotel – Hainan China

Material: Mint Sandstone , Grey Marble - 14.500 m²



2015-2016 Qatar Msheireb Down Town Project

Material: Misty Yellow Granite, Luna Grey Granite, Dark Grey Granite - 3.100 m²



2015 - Kazakhstan Almaty Esentai Project

Material: G602 Granite -1650 m²



2013 - 2014 / Haramain High Speed Railway Madinah Station

Material: Hubei Grey Granite - 55.000 m²



2013 / Zorlu Center , Raffles Hotel - Istanbul

Material: Chocalate Brown Marble, White Wooden Vein Marble, Carrara White Marble, Antique Brown Granite - 6.000 m²



2013 / Sunma Toys Office Center

Material: Beige Sandstone - 1.100 m²



2013 - 2012 / Marmaray BC-1 Project Bosphorus Tunnel Crossing - Istanbul

Material: Tongan White Granite - 35.000 m²



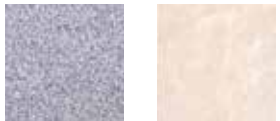
2013 - 2012 / Buzovna Estate Project – Baku Azerbaijan

Material: Thassos Prinos White Marble - 5.000 m²



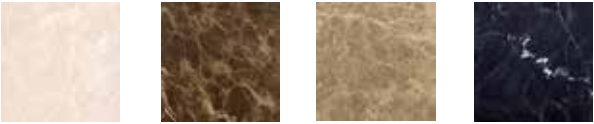
2012- 2011 / Kazakhstan Astana Triumphal Arch Project

Material: G603 Granite, Beige Marble - 20.000 m²



2012-2011 / Hilton Hotel Bucharest - Romania

Material: Burdur Beige, Emperador Dark, Emperador Light, Nero Marquina - 4.200 m²



2011 / Bati Atasehir Park - Istanbul

Material: G602 Granite, Basalt, Diabaz - 3.000 m²



2011 / Kazakhstan Astana Hospital Project

Material: Padang Dark Granite (G654) - 8.000 m²



2011 / Turkiye Bodrum Hilton Hotel

Material: Grey-Green Marble - 5.000 m²



2011-2010 / Oran Satellite Development Center - Algeria

Material: Nero Absolute, G603 Granite, Basalt - 12.000 m²



2011-2010 / Kazakhstan JTI Head Quarters

Material: Nero Absolute, Shanxi Black - 5.000 m²



2010 / Istanbul Delta Nichol Showroom

Material: Basalt - 1.000 m²



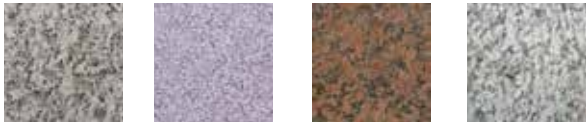
2010 / Turkmenistan Serdarcity Housing Project

Material: Ruby Red, G640, G681 Granite - 10.000 m²



2010 / Kirgizstan Turkish Embassy

Material: G602, G655, G562, Tian Shan Grey Granite - 2.500 m²



2009 / Istanbul Beylikduzu Kocbas Cash&Carry Buildings

Material: Xili Red, Absolute Black - 2.800 m²



2009/ Istanbul Valide Cesme Office Building

Material: Volacas Marble, Absolute Black - 1.250 m²



2009 / Turkmenistan Marry Museum

Material: G603 Granite, G681 Granite, Imperial Red, Absolute Black - 6.000 m²



2009 / Kazakhstan Actau Airport

Material: Bianco Crystal Granite - 12.000 m²



2009 / Azerbaijan Gence Airport

Material: G636 Granite - 6.500 m²



2008 / Azerbaijan Merdekan Airport

Material: G636 Granite - 7.000 m²



2008 / Azerbaijan Baku Holiday Inn Hotel

Material: Tan Brown Granite, Beige Marble, Emperador Dark Marble - 20.000 m²



2008-2007 / Istanbul Atik Pasa Four Seasons Hotel

Material: G654 Granite, Xili Red, Tianshan Red Granite - 3.500 m²

